



reUp remanufactured parts

Minor overhaul spare parts kit for
Jenbacher Type 3 gas engines



Product description

As the original manufacturer, nobody knows your engine better than GE. Through our reUp remanufactured parts program, we now offer a minor overhaul spare parts kit that includes everything you need for the long-term enhanced performance of your Jenbacher* Type 3 gas engines.

Our kits include a smart mix of fully tested, genuine GE new and remanufactured parts for all of the key components required to perform a minor overhaul – typically at 20,000 or 30,000 operating hours, based on your engine’s maintenance schedule.

Product details

GE’s reUp remanufactured spare parts kit program delivers genuine OEM parts that meet our exacting standards and specifications at a fraction of the cost of new core parts. Configured to your engine’s original specifications (as identified by engine or unit serial number), each spare part kit includes all the parts needed to perform a minor overhaul, and includes GE’s standard guarantee – typically another 12 months or 8,000 operating hours of engine operation.

Our minor overhaul spare parts kits contain:

Remanufactured parts that meet original part specifications – or the latest evolutionary specifications:

- Cylinder heads: Re-worked valve guide channels and new valve seats for significantly reduced valve regression
- Water/oil pumps: Re-worked and equipped with new bearings
- Connecting rods: Re-measured, re-worked and equipped with new bearing

New parts (core IP parts):

- Complete piston sets
- Liners

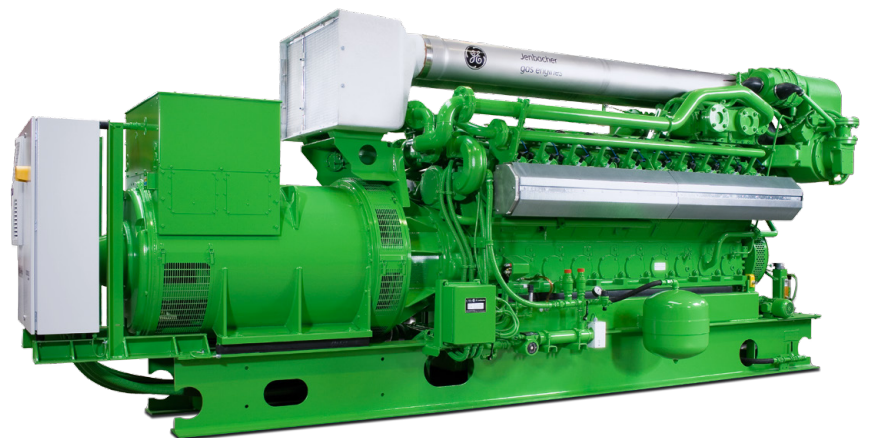
Consumables parts:

- Filters
- Spark plugs
- Gaskets
- Other bulk parts

The key components of GE’s minor overhaul spare part kit are based on used core parts that we have remanufactured. The core parts you receive as part of the kit have been invoiced and packed in boxes that you can use to return your corresponding used core parts.

Applicable units

Type 2		Type 4	
Type 3	✓	Type 6	





Customer benefits

- **Lower operating costs.** Although reUp parts are priced significantly below the cost of new genuine parts, they are trusted to go the distance and increase your return on investment. With proper inspection for wear and tear of core components, you can even achieve longer part life and longer service intervals.
- **Enhanced reliability.** GE offers a holistic and systematic engineering process to re-manufacture Jenbacher engine parts, and we back it up with our standard warranty – typically 12 months or 8,000 operating hours.
- **Smaller environmental impact.** Our reUp parts deliver efficiencies related to manufacturing materials and energy consumption, making our operations as environmentally conscious as our engines.

GE's Distributed Power global service network provides life cycle support for more than 35,000 reciprocating engines worldwide to help you meet your business challenges and success metrics – anywhere and anytime. Backed by our service providers in more than 150 countries, our service network connects with you locally for rapid response to your service needs.

Find your local support online:
www.gepower.com/distributedpower

Description

Ignition and elastic parts for electric components

- Plug.JenP7N1 4pcs. in can

Oil filter/oil cooler/oil pipes

- Filter cartridge

Water pump

Exchange of cylinder heads/valve clearance adjustment

- Cylinder head
- Sealing kit
- Cylinder head gasket

Various engine parts

- Vibration damper
- Starter..ISKRA
- Cylinder liner
- Scraper ring
- Piston
- Piston pin
- Snap ring
- Connecting rod bearing
- Connecting rod
- Main bearing
- Tappet
- Shaft seal

